

From the Heart

Ágnes Kutas-Keresztes

A lovely hat in various sizes with heart motifs on the front.



A little bit of love,,,

... for those who you love most. You can find sizes for babies, children and adults as well.

... for those who need love most. Feel free to use the pattern for charity knitting purposes!

Sizes

On page 2, you can find the baby hat written for 3 different gauges to choose from. Please take time to check gauge.

On page 3, you can find the child and adult sizes.

Directions are color-coded according to sizes.

Yarn

If you are knitting a hat for a baby, avoid fibers that shed, such as mohair, angora and alpaca. Ask for help in your LYS if you are not certain what yarn to choose.

I recommend wool for child and adult sizes: wool is warm and has good stitch definition.

You will need approximately one ball of yarn; 70 – 130 meters (75 – 140 yards) should be enough.

Needles and notions

double-pointed needles (needle size depends on the size chosen, please see directions for more information)

stitch markers, cable needle

Abbreviations

CO	cast on
k	knit
k2tog	knit two together
p	purl
RS	right side
st(s)	stitch(es)
WS	wrong side



Baby Hat

Hat circumference: 33 cm / 13 inches Length: 13,5 cm / 5 ¼ inches

Gauges

The list below shows the gauges, recommended needle sizes and the colors you have to follow in the directions with each gauge. Please take time to check your gauge.

- ♥ **24 stitches 32 rounds = 10 cm / 4 inches in stockinette stitch**
 - ⚙ Recommended needle size: 3 – 3,5 mm / US 2 ½ - 4
 - ⚙ follow the **BLACK** numbers
- ♥ **26 stitches 34 rounds = 10 cm / 4 inches in stockinette stitch**
 - ⚙ Recommended needle size: 3 – 3,5 mm / US 2 ½ - 4
 - ⚙ follow the **BLUE** numbers
- ♥ **28 stitches 36 rounds = 10 cm / 4 inches in stockinette stitch**
 - ⚙ Recommended needle size: 2,5 – 3 mm / US 1 ½ - 2 ½
 - ⚙ follow the **ORANGE** numbers

If there is only one number or it is not specifically written which version the directions refer to, they refer to all versions.

Directions

With double-pointed needles CO 80 (86, 92) stitches, place marker and join in the round. Work 5 (6, 6) rounds in [k1, p1] rib, then knit 2 rounds, increasing 4 stitches evenly spaced on last round. 84 (90, 96) stitches.

Start working in pattern as follows: knit 21 (24, 27), *Heart Chart*, knit 21 (24, 27). (*Heart Chart* on page 4, written-out version on page 5.)

Continue in pattern until you have completed all 22 rounds of *Heart Chart*.

Knit 1 round, decreasing 4 stitches evenly spaced. 80 (86, 92) stitches. Continue in stockinette stitch until work measures 9.5 (9, 9.5) cm = 3 ¾ (3 ½, 3 ¾) inches.

Only gauges 26 and 28: Work 2 more rounds in stockinette stitch, decreasing – (6, 4) stitches evenly spaced on first round. 80 (80, 88) stitches.

All gauges:

Work crown as follows:

Round 1: * K6, k2tog, repeat from * to end of round. 70 (70, 77) stitches.

Round 2 **and every even round:** Knit.

Round 3: * K5, k2tog, repeat from * to end of round. 60 (60, 66) stitches.

Round 5: * K4, k2tog, repeat from * to end of round. 50 (50, 55) stitches.

Round 7: * K3, k2tog, repeat from * to end of round. 40 (40, 44) stitches.

Round 9: * K2, k2tog, repeat from * to end of round. 30 (30, 33) stitches.

Round 11: * K1, k2tog, repeat from * to end of round. 20 (20, 22) stitches.

Round 13: K2tog around. 10 (10, 11) stitches.

Break yarn and draw through remaining stitches.

Weave in all ends.

For the **strap** pick up and knit 4 stitches from the bottom of the ribbing at the left side of the hat and work 35 cm / 13 ¾ inches in garter stitch (knit on RS rows, knit on WS rows). Work right strap as left strap.



Child and adult sizes

Please note that the different sizes require different yarn weights and gauges.

If you want a snuggler ribbing, knit it with a smaller needle size than given.

Hat circumference (in the directions: size)	36 cm 14 ¼ inches	40 cm 15 ¾ inches	45 cm 17 ¾ inches	50 cm 19 ¾ inches	55 cm 21 ¾ inches
Head circumference	38 – 40 cm 15 – 15 ¾ inches	42 – 44 cm 16 ½ - 17 ¼ inches	47 – 51 cm 18 ½ - 20 inches	52 – 56 cm 20 ½ - 22 inches	58 – 61 cm 22 ¾ – 24 inches
Hat length	14 cm 5 ½ inches	15 cm 6 inches	17 cm 6 ¾ inches	20 cm 7 ¾ inches	23 cm 9 inches
Gauge in stockinette stitch (10 cm / 4 inches)	24 sts 32 rounds	24 sts 32 rounds	22 sts 30 rounds	22 sts 30 rounds	22 sts 30 rounds
Needle size	3 – 3.5 mm US 2 ½ – 4	3 – 3.5 mm US 2 ½ – 4	3.5 – 4 mm US 4 – 6	3.5 – 4 mm US 4 – 6	3.5 – 4 mm US 4 – 6

Directions are color-coded according to sizes. If there is only one number or it is not specifically written which size the directions refer to, they refer to all sizes.

Directions

With double-pointed needles CO 86 (96, 100, 110, 122) stitches, place marker and join in the round.

Work 5 (6, 6, 7, 8) rounds in [k1, p1] rib, then knit two rounds, increasing 4 stitches evenly spaced on last round. 90 (100, 104, 114, 126) stitches.

Start working in pattern as follows: knit 24 (29, 31, 36, 42), Heart Chart, knit 24 (29, 31, 36, 42). (Heart Chart on page 4, written-out version on page 5.)

Continue in pattern until you have completed all 22 rounds of Heart Chart.

Knit 1 round, decreasing 4 stitches evenly spaced. 86 (96, 100, 110, 122) stitches. Continue in stockinette stitch until work measures 9.5 (11, 11.5, 14.5, 16.5) cm = 3 ¾ (4 ¼, 4 ½, 5 ¾, 6 ½) inches.

ONLY SIZES 36 and 55: Knit two more rounds, decreasing 6 (-, -, 2) stitches evenly spaced on first round. 80 (96, 100, 110, 120) stitches.

ONLY SIZES 45, 50 and 55:

Round 1: * K8, k2tog, repeat from * to end of round. 80 (96, 90, 99, 108) stitches.

Round 2 **and every even round:** Knit.

Round 3: * K7, k2tog, repeat from * to end of round. 80 (96, 80, 88, 96) stitches.

All sizes:

Start shaping crown as follows:

Round 1: * K6, k2tog, repeat from * to end of round. 70 (84, 70, 77, 84) stitches.

Round 2 **and every even round:** Knit.

Round 3: * K5, k2tog, repeat from * to end of round. 60 (72, 60, 66, 72) stitches.

Round 5: * K4, k2tog, repeat from * to end of round. 50 (60, 50, 55, 60) stitches.

Round 7: * K3, k2tog, repeat from * to end of round. 40 (48, 40, 44, 48) stitches.

Round 9: * K2, k2tog, repeat from * to end of round. 30 (36, 30, 33, 36) stitches.

Round 11: * K1, k2tog, repeat from * to end of round. 20 (24, 20, 22, 24) stitches.

Round 13: K2tog around. 10 (12, 10, 11, 12) stitches.

Break yarn and draw through remaining stitches.

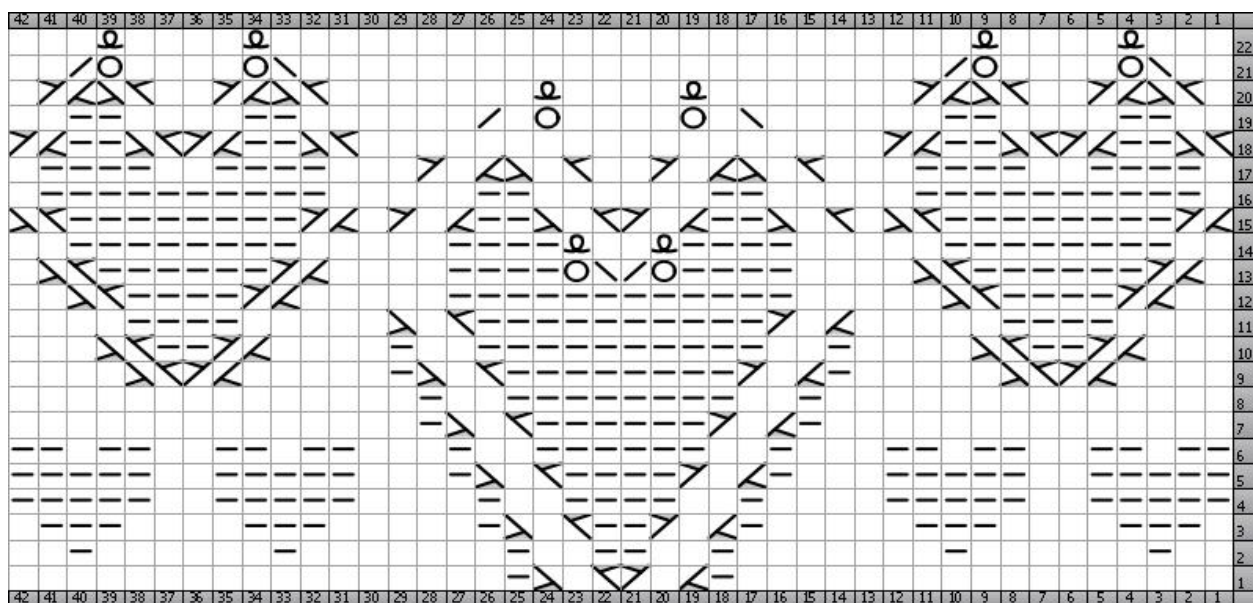
Weave in all ends.



Heart Chart

charted version

Read each round of chart from right to left.



Key

sign	abbreviation	what to do?
	k	k nit
	p	p url
	k1 tbl	knit one through the back loop
	yo	y arn o ver
	k2tog	k nit 2 t ogether
	ssk	slip slip knit
	11rpc	1/1 r ight p url c ross. Slip 1 stitch to cable needle and hold to back, k1 ; p1 from cable needle.
	11lpc	1/1 l eft p url c ross. Slip 1 stitch to cable needle and hold to front, p1 ; k1 from cable needle.
	21rpc	2/1 r ight p url c ross. Slip 1 stitch to cable needle and hold to back, k2 ; p1 from cable needle.
	21lpc	2/1 l eft p url c ross. Slip 2 stitches to cable needle and hold to front, p1; k2 from cable needle.



Heart Chart

written-out version

- Round 1: K17, p1, 21rpc, 21lpc, p1, k17.
Round 2: K2, p1, k6, p1, k7, p1, k2, p2, k2, p1, k7, p1, k6, p1, k2.
Round 3: K1, p3, k4, p3, k5, p1, 21rpc, p2, 21lpc, p1, k5, p3, k4, p3, k1.
Round 4: P5, k2, p5, k4, p1, k2, p4, k2, p1, k4, p5, k2, p5.
Round 5: P5, k2, p5, k3, p1, 21rpc, p4, 21lpc, p1, k3, p5, k2, p5.
Round 6: P2, k1, p2, k2, p2, k1, p2, k3, p1, k2, p6, k2, p1, k3, p2, k1, p2, k2, p2, k1, p2.
Round 7: K14, p1, 21rpc, p6, 21lpc, p1, k14.
Round 8: K14, p1, k2, p8, k2, p1, k14.
Round 9: K4, 11rpc, 11lpc, k5, p1, 21rpc, p8, 21lpc, p1, k5, 11rpc, 11lpc, k4.
Round 10: K3, 11rpc, p2, 11lpc, k4, p1, k2, p10, k2, p1, k4, 11rpc, p2, 11lpc, k3.
Round 11: K4, p4, k5, 21rpc, p10, 21lpc, k5, p4, k4.
Round 12: K2, 11rpc, p4, 11lpc, k5, p12, k5, 11rpc, p4, 11lpc, k2.
Round 13: K1, 11rpc, p6, 11lpc, k4, p4, yo, k2tog, ssk, yo, p4, k4, 11rpc, p6, 11lpc, k1.
Round 14: K2, p8, k5, p4, k1 tbl, k2, k1 tbl, p4, k5, p8, k2.
Round 15: 11rpc, p8, 11lpc, k1, 21lpc, p2, 21rpc, 21lpc, p2, 21rpc, k1, 11rpc, p8, 11lpc.
Round 16: K1, p10, k5, p2, k6, p2, k5, p10, k1.
Round 17: K1, p4, k2, p4, k3, 21lpc, 21rpc, k2, 21lpc, 21rpc, k3, p4, k2, p4, k1.
Round 18: 11lpc, p2, 11rpc, 11lpc, p2, 11rpc, k18, 11lpc, p2, 11rpc, 11lpc, p2, 11rpc.
Round 19: K2, p2, k4, p2, k6, ssk, k1, yo, k4, yo, k1, k2tog, k6, p2, k4, p2, k2.
Round 20: K1, 11lpc, 11rpc, k2, 11lpc, 11rpc, k7, k1 tbl, k4, k1 tbl, k7, 11lpc, 11rpc, k2, 11lpc, 11rpc, k1.
Round 21: K2, ssk, yo, k4, yo, k2tog, k22, ssk, yo, k4, yo, k2tog, k2.
Round 22: K3, k1 tbl, k4, k1 tbl, k24, k1 tbl, k4, k1 tbl, k3.

