

Ágnes Kutas

# MOSS GARDEN

1



## MATERIALS

### YARN

Barka Piktör Cinege  
100% wool  
465 meters (508 yards) / 100 g  
1 (2, 2, 3) skeins

### NEEDLES

3.5 mm (US 4) circular needle, at least  
100 cm (40 inches) long  
4.5 mm (US 7) circular needle, at least  
100 cm (40 inches) long

### NOTIONS

stitch markers  
yarn needle  
blocking pins

## SIZES

XS: 120 x 37 cm (47¼ x 14½ inches)  
S: 144 x 46 cm (56¾ x 18 inches)  
M: 162 x 52 cm (63¾ x 20½ inches)  
L: 186 x 61 cm (73¾ x 24 inches)

Shown in Size XS.

Directions are color-coded according to sizes. If there is only one number or it is not specifically written which size the directions refer to, they refer to all sizes.

## GAUGE

19 stitches / 40 rows = 10 cm (4 inches)  
in pattern (Chart A) using 3.5 mm (US 4)  
needles, blocked

Obtaining the gauge given is not crucial  
for a successful project but will affect the  
finished size and the yardage needed.

## ABBREVIATIONS

<b>BO</b>	bind off
<b>CO</b>	cast on
<b>inc</b>	increase
<b>k</b>	knit
<b>k2tog</b>	knit two together
<b>k2togtbl</b>	knit two together through the back loop
<b>kfb</b>	knit front and back
<b>p</b>	purl
<b>patt</b>	pattern
<b>pm</b>	place marker
<b>rep</b>	repeat
<b>RS</b>	right side
<b>sl1 k2tog</b>	psso slip one, knit two together, pass slipped stitch over
<b>sm</b>	slip marker
<b>ssk</b>	slip slip knit
<b>st(s)</b>	stitch(es)
<b>WS</b>	wrong side
<b>yo</b>	yarn over

## DIRECTIONS

### SET-UP

With **3.5 mm (US 4)** circular needle and using your preferred provisional cast-on method, CO 3 sts and knit 23 rows (= 23 rows in garter stitch). Turn work 90° clockwise, pick up and knit 11 sts along the edge (use front loops of purl edge sts), then undo the provisional cast-on, place 3 live sts on left needle and knit these 3 sts. **17 sts**

**In the directions that follow, the garter stitch border is marked with green.**

**Rows 1, 3, 5, 7 and 9 (WS): K3**, purl to last 3 sts, **k3**.

**Row 2 (RS): K3**, pm, [kfb, k1, kfb, pm, k1, pm] twice, kfb, k1, kfb, pm, **k3**. **23 sts**

**Row 4 (RS): K3**, sm, [kfb, k3, kfb, sm, k1, sm] twice, kfb, k3, kfb, sm, **k3**. **29 sts**

**Row 6 (RS): K3**, sm, [kfb, k5, kfb, sm, k1, sm] twice, kfb, k5, kfb, sm, **k3**. **35 sts**

**Row 8 (RS): K3**, sm, [kfb, k7, kfb, sm, k1, sm] twice, kfb, k7, kfb, sm, **k3**. **41 sts**

### BODY

Work Rows 1 – 24 of **Chart A** 5 (**6, 7, 8**) times. **281 (329, 377, 425) sts**

**Work patt reps (in red boxes) twice more with each rep.**

repeat	number of sts on the needle after Row 24	How many times do I have to work each pattern repeat? (red boxes in chart)
1	89	1
2	137	3
3	185	5
4	233	7
5	281	9
6	329	11
7	377	13
8	425	15

### BORDER

**Row 1 (RS, inc row): Remove all markers while working this row.**

Size XS: [K5, kfb, k4, kfb] 3 times, [k4, kfb] to last 38 sts, [k5, kfb, k4, kfb] 3 times, k5. **335 sts**

**Size S:** [K4, kfb, k3, kfb] 13 times, [k4, kfb] 20 times, [k4, kfb, k3, kfb] 12 times, k4. **399 sts**

**Size M:** [K5, kfb, k4, kfb] 11 times, [k4, kfb] 26 times, [k5, kfb, k4, kfb] 11 times, k5. **447 sts**

**Size L:** K3, kfb, [k4, kfb, k3, kfb] to last 7 sts, k3, kfb, k3. **519 sts**

**Row 2 (WS):** Knit.

**Row 3 (RS):** Knit.

**Row 4 (WS):** Knit.

**Row 5 (RS):** Knit.

**Row 6 (WS): K3**, purl to last 3 sts, **k3**.

Work Rows 1 – 10 of **Chart B** once (**twice, twice, three times**), then work Rows 1 – 5 of **Chart C** once (**once, once, once**).

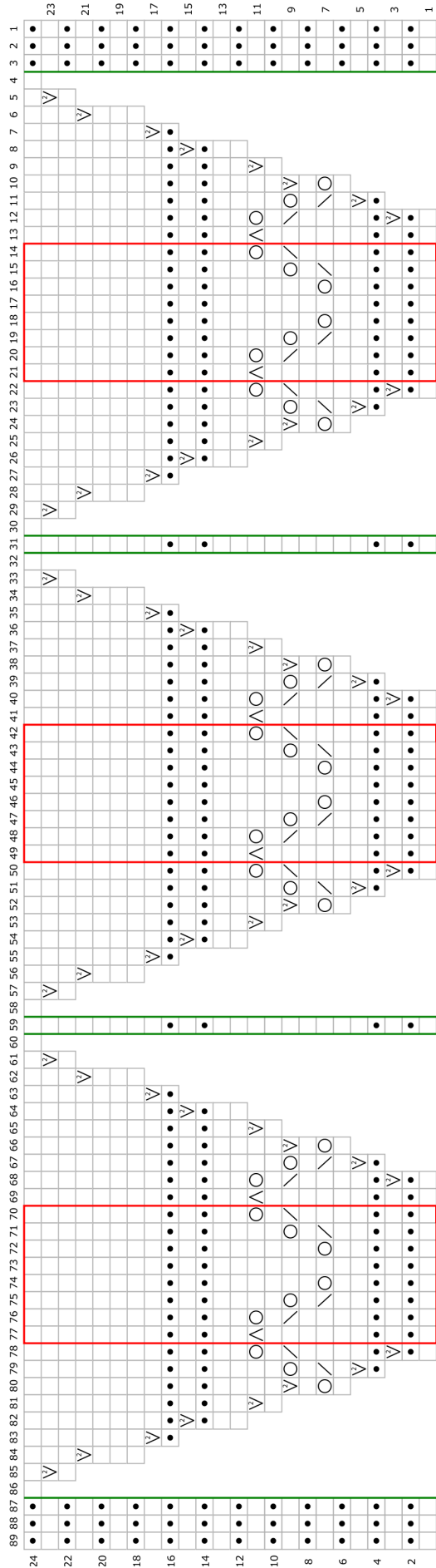
Change to **4.5 mm (US 7)** circular needle and work **one WS row** as follows: **K3**, purl to last 3 sts, **k3**.

**BO all sts** as follows (**RS**): K1, \* k1, slip the two sts on right needle back to left needle and k2togtbl, rep from \* until all sts are bound off.

### FINISHING

Block to measurements. Weave in ends.





The instruction "slip marker" is not written out in each row to save space and to make the instructions more concise.

**Row 1 (RS): Knit.**

**Row 2 (WS): Knit.**

**Row 3 (RS): K3**, sm, [kfb, knit to 1 st before m, kfb, sm, k1, sm] twice, kfb, knit to 1 st before m, kfb, sm, **K3**.

**Row 4: Knit.**

**Row 5: K3**, sm, [kfb, knit to 1 st before m, kfb, sm, k1, sm] twice, kfb, knit to 1 st before m, kfb, sm, **K3**.

**Row 6: K3**, purl to last 3 sts, **K3**.

**Row 7: K3, sm**, \* yo, ssk, k2, [k1, k2tog, yo, k1, yo, ssk, k2] to 3 sts before m, k1, k2tog, yo, sm, k1, sm, rep from \* once, yo, ssk, k2, [k1, k2tog, yo, k1, yo, ssk, k2] to 3 sts before m, k1, k2tog, yo, sm, **K3**.

**Row 8: K3**, purl to last 3 sts, **K3**.

**Row 9: K3**, sm, \* kfb, yo, ssk, k1, [k2tog, yo, k3, yo, ssk, k1] to 3 sts before m, k2tog, yo, kfb, sm, k1, sm, rep from \* once, kfb, yo, ssk, k1, [k2tog, yo, k3, yo, ssk, k1] to 3 sts before m, k2tog, yo, kfb, sm, **K3**.

**Row 10: K3**, purl to last 3 sts, **K3**.

**Row 11: K3**, sm, \* kfb, k2, yo, sl1 k2tog psso, [yo, k5, yo, sl1 k2tog psso] to 3 sts before m, yo, k2, kfb, sm, k1, sm, rep from \* once, kfb, k2, yo, sl1 k2tog psso, [yo, k5, yo, sl1 k2tog psso] to 3 sts before m, yo, k2, kfb, sm, **K3**.

**Row 12: K3**, purl to last 3 sts, **K3**.

**Row 13 and 14: Knit.**

**Row 15: K3**, sm, [kfb, knit to 1 st before m, kfb, sm, k1, sm] twice, kfb, knit to 1 st before m, kfb, sm, **K3**.

**Row 16: Knit.**

**Row 17: K3**, sm, [kfb, knit to 1 st before m, kfb, sm, k1, sm] twice, kfb, knit to 1 st before m, kfb, sm, **K3**.

**Row 18: K3**, purl to last 3 sts, **K3**.

**Row 19: Knit.**

**Row 20: K3**, purl to last 3 sts, **K3**.

**Row 21: K3**, sm, [kfb, knit to 1 st before m, kfb, sm, k1, sm] twice, kfb, knit to 1 st before m, kfb, sm, **K3**.

**Row 22: K3**, purl to last 3 sts, **K3**.

**Row 23: K3**, sm, [kfb, knit to 1 st before m, kfb, sm, k1, sm] twice, kfb, knit to 1 st before m, kfb, sm, **K3**.

**Row 24: K3**, purl to last 3 sts, **K3**.

RS: knit  
WS: purl

RS: purl  
WS: knit

yo

k2tog

ssk

sl1 k2tog psso

kfb

pattern repeat

stitch marker

## READING CHARTS

Read charts from right to left on RS rows, from left to right on WS rows. If the chart contains a pattern repeat (marked by a red box), work the stitches before the pattern repeat once, then work pattern repeat as many times as needed, and finally work the stitches after the pattern repeat once.



## CHART B

	31	30	29	28	27	26	25	24	23	22	21	20	19	18	17	16	15	14	13	12	11	10	9	8	7	6	5	4	3	2	1	
10	●	●	●																											●	●	●
9							○	△	○						○	△	○						○	△	○							
8	●	●	●																											●	●	●
7						○	/		\	○					○	/		\	○				○	/		\	○					
6	●	●	●																											●	●	●
5					\	○					○	△	○						○	△	○						○	/				
4	●	●	●																											●	●	●
3					\	○				○	/		\	○				○	/		\	○				○	/					
2	●	●	●																											●	●	●
1					\	○		○	/				\	○		○	/			\	○		○	/								

**Row 1 (RS):** K5, k2tog, yo, k1, yo, ssk, k2, [k1, k2tog, yo, k1, yo, ssk, k2] to last 11 sts, k1, k2tog, yo, k1, yo, ssk, k5.

**Row 2 and all WS rows:** K3, purl to last 3 sts, k3.

**Row 3:** K4, k2tog, yo, k3, yo, ssk, k1, [k2tog, yo, k3, yo, ssk, k1] to last 11 sts, k2tog, yo, k3, yo, ssk, k4.

**Row 5:** K3, k2tog, yo, k5, yo, sl1 k2tog psso, [yo, k5, yo, sl1 k2tog psso] to last 10 sts, yo, k5, yo, ssk, k3.

**Row 7:** K5, yo, ssk, k1, k2tog, yo, k2, [k1, yo, ssk, k1, k2tog, yo, k2] to last 11 sts, k1, yo, ssk, k1, k2tog, yo, k5.

**Row 9:** K6, yo, sl1 k2tog psso, yo, k3, [k2, yo, sl1 k2tog psso, yo, k3] to last 11 sts, k2, yo, sl1 k2tog psso, yo, k6.

*This Chart ends with Row 10 (WS).*

- ☐ RS: knit  
WS: purl
- ☒ RS: purl  
WS: knit
- ☐ yo
- ☐ k2tog
- ☐ ssk
- ☐ sl1 k2tog psso
- ☐ pattern repeat

## CHART C

	31	30	29	28	27	26	25	24	23	22	21	20	19	18	17	16	15	14	13	12	11	10	9	8	7	6	5	4	3	2	1	
4	●	●	●								○	△	○						○	△	○						○	/		●	●	●
2	●	●	●								○	/							○	/							○	/		●	●	●

□ RS: knit  
WS: purl

• RS: purl  
WS: knit

○ yo

/ k2tog

\ ssk

△ sl1 k2tog psso

□ pattern repeat

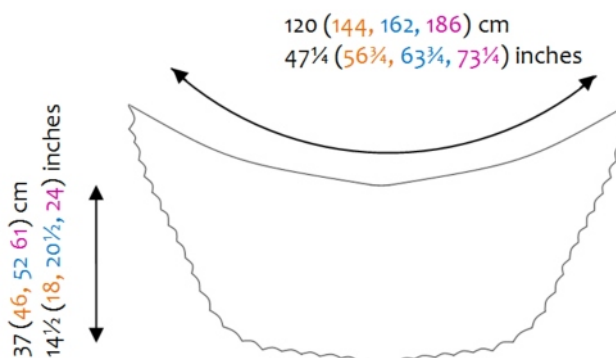
**Row 1 (RS):** K5, k2tog, yo, k1, yo, ssk, k2, [k1, k2tog, yo, k1, yo, ssk, k2] to last 11 sts, k1, k2tog, yo, k1, yo, ssk, k5.

**Row 2 (WS):** K3, purl to last 3 sts, k3.

**Row 3:** K4, k2tog, yo, k3, yo, ssk, k1, [k2tog, yo, k3, yo, ssk, k1] to last 11 sts, k2tog, yo, k3, yo, ssk, k4.

**Row 4:** K3, purl to last 3 sts, k3.

**Row 5:** K3, k2tog, yo, k5, yo, sl1 k2tog psso, [yo, k5, yo, sl1 k2tog psso] to last 10 sts, yo, k5, yo, ssk, k3.



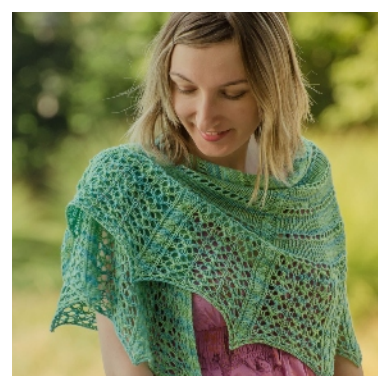
## MORE PATTERNS FROM ÁGNES



Amaryllis



Vanilla Orchid



Tropical Morning

## CONTACT

website [agnes.kutas.ch](http://agnes.kutas.ch)

email [agnes@kutas.ch](mailto:agnes@kutas.ch)

ravelry [www.ravelry.com/designers/agnes-kutas-keresztes](http://www.ravelry.com/designers/agnes-kutas-keresztes)

facebook [www.facebook.com/agneskutasknitwear design](http://www.facebook.com/agneskutasknitwear design)

twitter [twitter.com/AgnesKutas](https://twitter.com/AgnesKutas)