

# Dark Forest

Ágnes Kutas-Keresztes

## Finished Measurements

**Chest:** 82 (87, 92, 96) cm  
32 ¼ (34 ¼, 36 ¼, 37 ¾) "

**Length:** 56.5 (56.5, 57, 57.5) cm  
22 ¼ (22 ¼, 22 ½, 22 ¾) "

Directions are colour-coded according to sizes.  
If there is only one number or it is not specifically written which size the directions refer to, they refer to all sizes.

## Materials

### Yarn

weight: sport  
fibre: 100 % wool  
amount: 580 (630, 670, 700) meters  
635 (690, 730, 765) yards

**Yarn used:** Kauni Wool 8/2 Effectyarn,  
100% wool, 600 m (660 yds) / 150 g  
Colourway: EB

### Needles

- 3.5 mm (US 4) and 4 mm (US 6) circular needle, 60 cm (24 inches) or longer (*longer needle recommended for larger sizes*)
  - 3.5 mm (US 4) circular needle, 40 cm (16 inches) long OR dpn
  - 4 mm (US 6) straight needles
- OR USE NEEDLE SIZE THAT GIVES YOU THE CORRECT GAUGE**

### Notions

- Stitch markers
- Stitch holders
- Round counter (optional)

## Gauge

21 stitches / 28 rounds = 10 cm / 4 inches in stockinette stitch using 4 mm (US 6) needles  
22 stitches / 28 rounds = 10 cm / 4 inches in pattern using 4 mm (US 6) needles



# Abbreviations

BO	bind off
CO	cast on
foll	following
k	knit
k2tog	knit two together
k3tog	knit 3 together
M1	make one. Lift strand between needles from front to back with left needle, knit the resulting new stitch through the back loop.
p	purl
RS	right side
sk2p	slip one stitch, knit two stitches together, pass slipped stitch over
ssk	slip slip knit
WS	wrong side
yo	yarn over

## Notes

Body decrease and increase rounds are always done on even rounds of the *Fern Lace* pattern (knit stitches).

---

## Directions

### Body (back and front)

With 3.5 mm (US 4) circular needle CO 170 (180, 192, 198) stitches, place marker (round counter) and join in the round.

Work in [k1, p1] rib for 18 rounds, increasing 10 (12, 12, 14) stitches evenly on last round. 180 (192, 204, 212) stitches.

Change to 4 mm (US 6) circular needle and work one round as follows: knit 90 (96, 102, 106) stitches, place side marker, knit to end of round.

Start **working in pattern** as follows:

Size 32 ¼ ”: K3, [Fern Lace Chart, k1] 4 times, Fern Lace Chart, k3, slip marker, k3, [Fern Lace Chart, k1] 4 times, Fern Lace Chart, k3.

Size 34 ¼ ”: K4, [Fern Lace Chart, k2] 4 times, Fern Lace Chart, k4, slip marker, k4, [Fern Lace Chart, k2] 4 times, Fern Lace Chart, k4.

Size 36 ¼ “: K5, [Fern Lace Chart, k3] 4 times, Fern Lace Chart, k5, slip marker, k5, [Fern Lace Chart, k3] 4 times, Fern Lace Chart, k5.

Size 37 ¾ “: K5, [Fern Lace Chart, k4] 4 times, Fern Lace Chart, k5, slip marker, k5, [Fern Lace Chart, k4] 4 times, Fern Lace Chart, k5.

Never forget to work the knit stitches between the Fern Lace panels!

Work 10 (10, 12, 12) more rounds in pattern.

Next round, **decrease round**: \* K1, ssk, work to 3 stitches before marker, k2tog, k1, slip marker, repeat from \* to end of round. 176 (188, 200, 208) stitches.

Repeat decrease round every 14<sup>th</sup> round twice. 168 (180, 192, 200) stitches.

Work 13 (13, 13, 13) rounds in pattern.



Next round, **increase round**: \* K1, M1, work to 1 stitch before marker, M1, k1, slip marker, repeat from \* to end of round. 172 (184, 196, 204) stitches.

Repeat increase round every 14<sup>th</sup> round twice. 180 (192, 204, 212) stitches.

Continue working in pattern until work measures 36 (36, 36.5, 36.5) cm = 14 ¼ (14 ¼, 14 ¼, 14 ¼) inches. Finish with an even round of chart.

## Divide for front and back

*Tip: You can make the stripes of your vest match up if you divide each colour coming and put aside half of it for the front.*

BO 2 (2, 2, 2) stitches, work to side marker. Turn, leave remaining stitches on holder. BO 2 (2, 2, 2) stitches and purl to end of row. 86 (92, 98, 102) stitches on **back**.

BO 1 (1, 1, 1) stitch(es) at the beg of next 2 rows, then BO 1 stitch at the beg of the foll - (2, 4, 4) row(s). 84 (88, 92, 96) stitches.

Work even in pattern until back measures 54.5 (54.5, 55, 55.5) cm = 21 ½ (21 ½, 21 ½, 21 ¾) inches from CO, ending with a WS row.

Begin **back neck shaping and shaping of left shoulder**.

Next row (RS): Work 16 stitches in *Fern Lace* pattern, k 4 (5, 5, 7). BO 44 (46, 50, 50) stitches knitwise for neck opening, knit until you have 4 (5, 5, 7) stitches on right needle after neck opening, work in pattern as established to end of row.

Next row (WS): Purl 20 (21, 21, 23) stitches. Turn.

Next row (RS): BO 2 stitches knitwise, work in pattern as established to end of row.

Next row (WS): Purl.

Next row (RS): BO 1 stitch, work in pattern as established to end of row.

Purl one row, put remaining 17 (18, 18, 20) stitches of left shoulder on holder.

Work right shoulder as left shoulder reversing shaping.

## Front

Attach yarn to **front** stitches with RS facing.

Row 1 (RS): BO 2 (2, 2, 2) stitches knitwise, knit until you have 1 (2, 3, 3) stitches on right needle, work 16 stitches in *Fern Lace* pattern, k 4 (5, 5, 7), turn, leave remaining stitches on holder.

Row 2 (WS): BO 2 stitches purlwise, purl to end of row.

Row 3 (RS): BO 1 (1, 1, 1) stitch(es), work in pattern until you have 16 (17, 18, 18) stitches on right needle, k 2 (3, 3, 5).

Row 4 (WS): BO 1 stitch, purl to end of row.

**Only Sizes 34 ¼, 36 ¼, 37 ¾:**

Row 5 (RS): BO 1 (1, 1) stitch, work in pattern until you have 16 (17, 17) stitches on right needle, k 2 (2, 4).

Row 6 (WS): Purl.

**Only Sizes 36 ¼, 37 ¾:**

Row 7 (RS): BO 1 (1) stitch, work in pattern until you have 16 stitches on right needle, k 2 (4).

**All Sizes:**

Work in pattern ([16 stitches *Fern Lace* Chart, k 1 (2, 2, 4)] on RS, purl on WS) until work measures 56.5 (56.5, 57, 57.5) cm = 22 ¼ (22 ¼, 22 ½, 22 ¾) " from CO. Put remaining 17 (18, 18, 20) stitches on holder.



Attach yarn to held stitches of right front with RS facing. BO 44 (46, 50, 50) stitches knitwise, knit until you have 4 (5, 5, 7) stitches on right needle, work in pattern as established to end of row. Finish right front as left front reversing shaping.

## Finishing

Join shoulders with 3-needle bind-off. (Need help? Visit [agnes.kutas.ch/content/3-needle-bind](http://agnes.kutas.ch/content/3-needle-bind))

With 3.5 mm (US 4) 40 cm (16 inches) long circular needle or double-pointed needles pick up and knit 98 (100, 102, 102) stitches around armhole edge. Place marker and join in the round. Work in [k1, p1] rib until rib measures 3 cm = 1 ¼ ". BO in rib.

With 3.5 mm (US 4) circular needle, starting at left shoulder seam, pick up and knit 192 (196, 204, 206) stitches around neck edge, marking corner stitch in left and right bottom. Place marker, work as follows.

**Round 1:** Work in [k1, p1] rib, making sure that you work the corner stitches as knit stitches.

**Round 2:** Work to one stitch before corner stitch. Insert needle from left to right into second and first stitch on left needle, as if you would knit the two stitches together, slip the two stitches onto right needle (do not actually knit them!). Knit following stitch on left needle. Insert left needle into the formerly slipped two stitches from left to right, pull the two stitches over knitted stitch. Work to one stitch before second corner stitch and decrease as before. Work in rib to end of round.

Continue working [Round 1, Round 2] until rib measures 3 cm = 1 ¼ ". BO in rib.

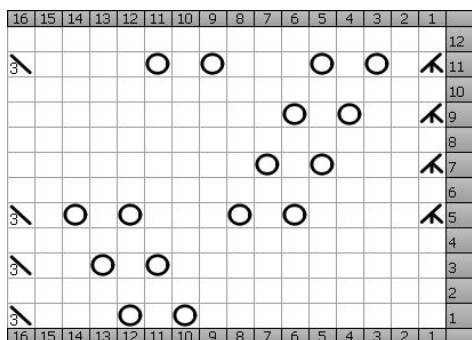
Block to measurements. Weave in all ends.

*This pattern is provided for your personal, non-commercial use and may not be resold or shared.*

*If you have any questions or problems, email [agnes@kutas.ch](mailto:agnes@kutas.ch) or visit [www.agnes.kutas.ch](http://www.agnes.kutas.ch).*

*Finished projects are most welcome in the Ágnes Kutas Knitwear Design ravelry group ☺*

## Fern Lace Chart



### Key:

- k (knit) on RS, p (purl) on WS
- yarn over (yo)
- ↗ knit 3 together (k3tog)
- ↘ sk2p: slip one stitch, knit two stitches together, pass slipped stitch over

**Even rounds: k16 on RS, p16 on WS**

Round 1: k9, yo, k1, yo, k3, sk2p

Round 3: k10, yo, k1, yo, k2, sk2p

Round 5: k3tog, k4, yo, k1, yo, k3, yo,  
k1, yo, k1, sk2p

Round 7: k3tog, k3, yo, k1, yo, k9

Round 9: k3tog, k2, yo, k1, yo, k10

Round 11: k3tog, k1, yo, k1, yo, k3, yo, k1,  
yo, k4, sk2p

